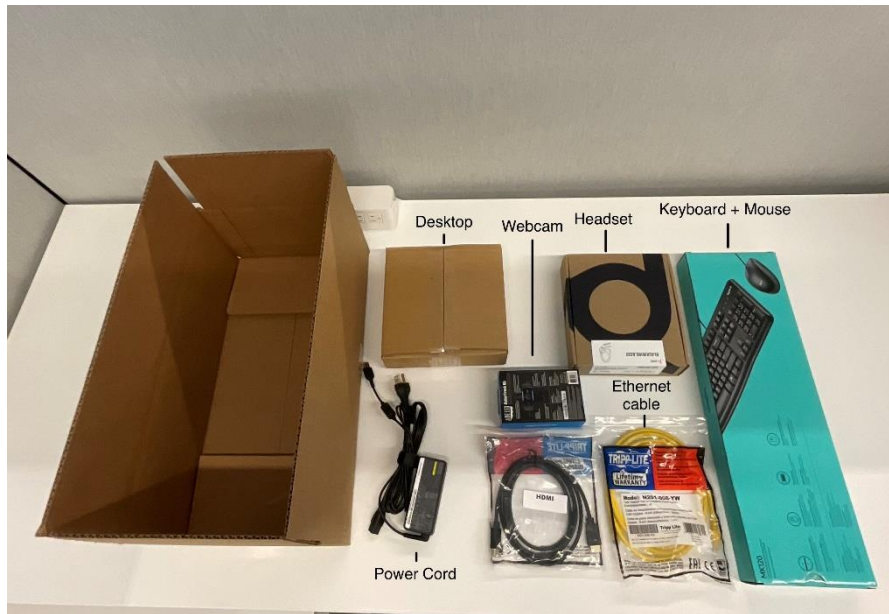


CSR Desktop Setup Guide

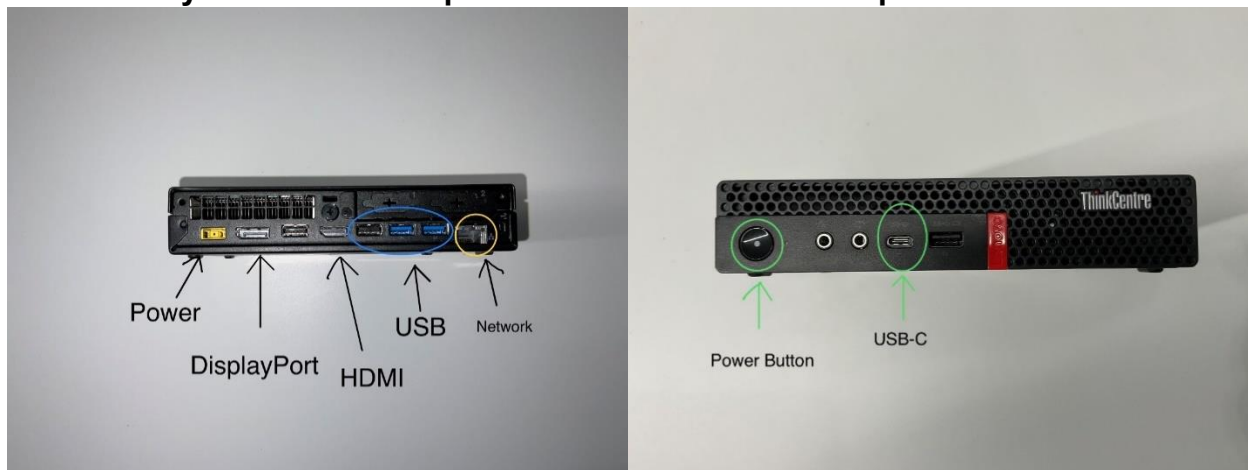
The following guide will help you set up your computer

Open the computer box and familiarize yourself with the following contents:

- x1 Desktop
- x1 Desktop Power Cord
- x1 Keyboard + Mouse combo
- x1 Headset
- x1 Webcam
- x1 HDMI Cable
- x1 Ethernet Cable



Familiarize yourself with the ports and button on the computer:



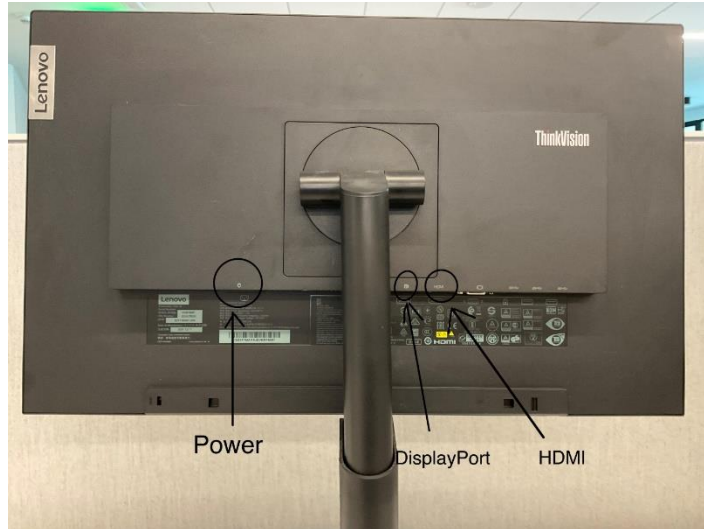


Monitor setup



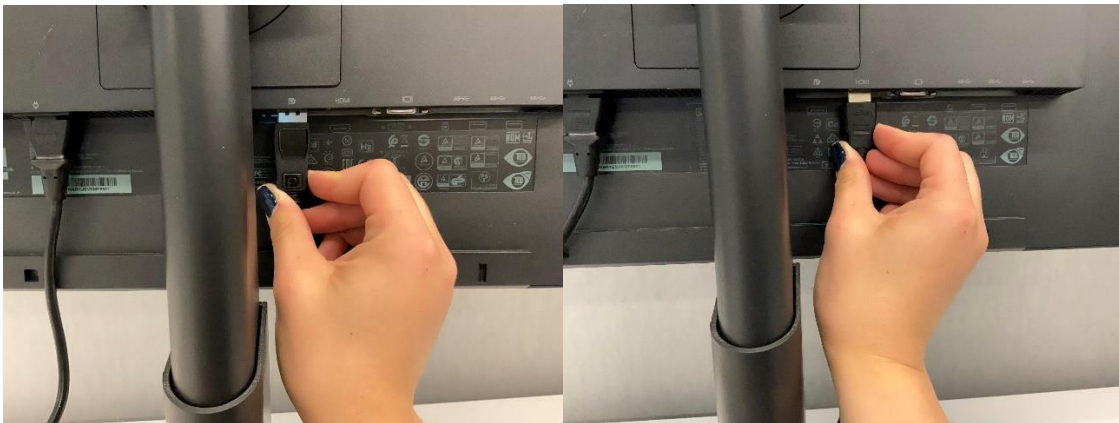
Open the monitor boxes and use the included instructions to assemble the monitors

Familiarize yourself with the ports on the monitors:



Step 1: Plug one end of the DisplayPort cable into the display port connector of one of the monitors

Step 2: Plug one end of the HDMI cable into the HDMI port on the other monitor



DisplayPort

HDMI

Important

Put the monitor you plugged the DisplayPort cable into on the **Left** side of your desk

Put the monitor you plugged the HDMI cable into on the **Right** side of your desk

Workstation Setup

Step 1: Plug in the Desktop Power Cable and the other end into wall outlet



Step 2: Connect the Ethernet Cable to the Ethernet port and the other end into router



Step 3: Connect the Keyboard to a USB Port



Step 4: Connect the Mouse to a USB Port



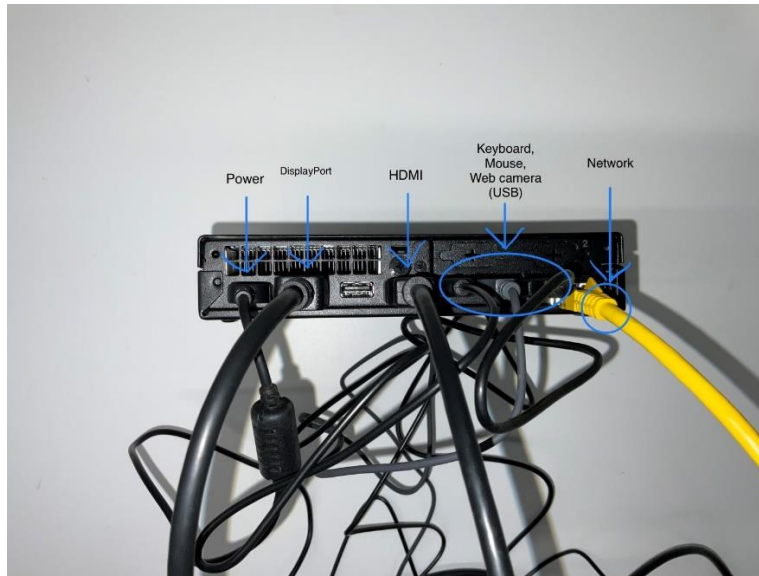
Step 5: Connect the Webcam to a USB Port



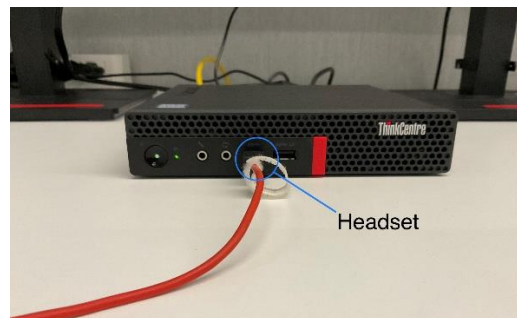
Step 6: Connect the HDMI CABLE



Step 7: Connect the DisplayPort Cable



Step 8: Connect the headset to the USB-C connector



Push Power Button, ideally your desktop should look like photo below

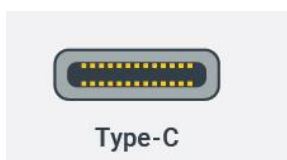


Port reference guide:

USB



USB Type-C



HDMI



Display Port

